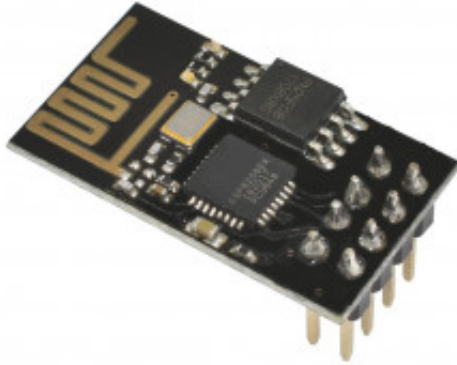


ESP8266 ESP-01 WIFI Wireless Transceiver



Produktkode: 525

Tilgjengelighet: 5

Custom Field 5 (Location): L 1-2

Pris: kr. 65,00

Short Description

ESP8266 ESP-01 WIFI Wireless Transceiver Send Receive LWIP AP+STA

Beskrivelse

[Se info her](#)

<https://en.wikipedia.org/wiki/ESP8266>

[ESP8266 kan gå i sovemodus](#)

Esp8266 med

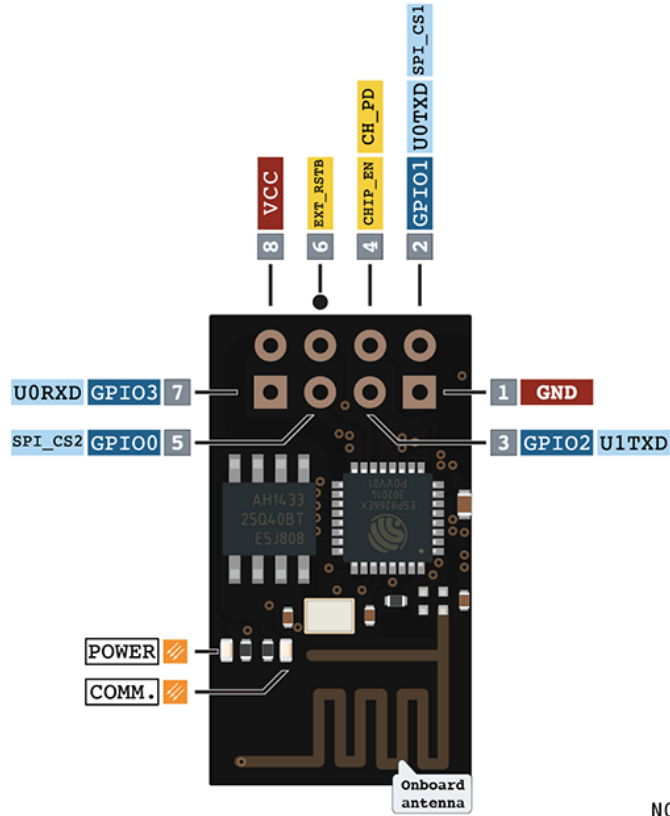
Arduino: <https://www.geekstips.com/esp8266-arduino-tutorial-iot-code-example/>

esp-01, AT-kommandoer for TCP

server/klient-kommunikasjon: <https://youtu.be/01BtAGrSJmc>

Pinout

ESP-01 PINOUT



■ POWER	■ SP. FUNCTION(S)
■ I/O	■ COMM. INTERFACE
■ ADC	■ PIN NUMBER
■ CONTROL	PWM
 N/C	

NOTES:

- ▲ Typ. pin current 6mA (Max. 12mA)
- ▲ For sleep mode, connect GPIO16 and EXT_RSTB. On wakeup, GPIO16 will output LOW for system reset.
- ▲ On boot/reset/wakeup, keep GPIO15 LOW and GPIO2 HIGH.